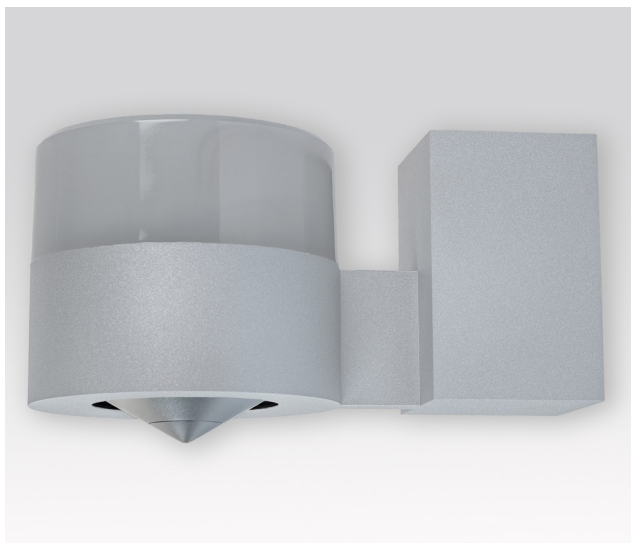


# CONO solo SMART



## The smart wall speaker

### The ideal wireless loudspeaker for wall mounting

The CONO solo SMART wall-mounted loudspeaker is a wireless loudspeaker that is primarily used when the architectural circumstances do not permit installation in or on the ceiling. This may be the case, for example, in atriums without suspension options or in listed buildings. It is also ideal for supplementing existing luminaire systems on the wall. The recommended installation height is ~ 2.4 metres or higher. This means that the sound source is always above the listener's ears, resulting in optimum sound quality in all listening positions.

## Technical Data

### Application

Wall-mounted loudspeaker

### Design

Colours	● ○ ●
Dimensions	Ø 134 mm - 130 x 220 mm
Material housing	Aluminum

### Sound

Principle	360° - Speaker with integrated amplifier and wireless module
Output power	40 W RMS
Equipment	NewTec KA10 loudspeaker 50W 4Ω
Efficiency	85.5 dB
Max. SRL	103.5 dB
Frequency response	105-21,000 Hz
Radio frequency	1.9 GHz n-DECT
Transmitter	SMARTplayer

### Installation

Weight	1.6 kg
Power supply	AC 100-240 V; 50/60 Hz; 0.5 A
Connections	Power cable