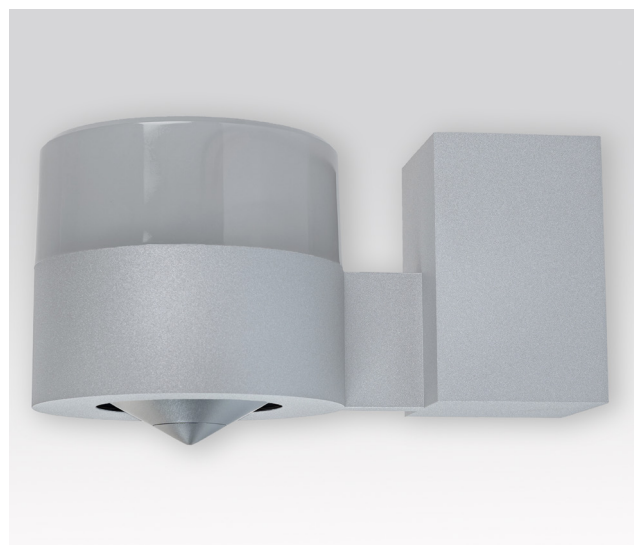


CONO solo



The flexible wall speaker


The wall speaker with exceptional acoustic performance

The CONO solo wall-mounted loudspeaker is primarily used when the architectural circumstances do not permit installation in or on the ceiling. This may be the case, for example, in atriums without suspension options or in listed buildings. Or the CONO solo can simply be used to visually complement existing luminaire systems on the wall. The recommended installation height is ~ 2.4 metres or higher. This means that the sound source is always above the listener's ears, resulting in optimum sound quality in all listening positions.

Technical Data

Application Wall-mounted loudspeaker

Design

Colours 
 Dimensions \varnothing 134 x 130 x 220 mm
 Material Aluminum

Sound

	CONO solo 50	CONO solo M	CONO solo S	CONO solo V
Principle	Full-range a 360°	Full-range a 360°	Full-range a 360°	Full-range a 360°
Nominal power	50 W / 90 W	50 W / 90 W	100 W / 180 W	5-10-20 W adjustable
Impedance	16 Ω	4 Ω	8 Ω	100V / 1,9k-940-470 Ω
Efficiency	83,4 dB	85,5 dB	82,8 dB	86,8 dB
Max. SPL	100 dB	102 dB	104 dB	99,5 dB
Frequency response	105-21.000 Hz	95-21.000 Hz	85-21.000 Hz	105-21.000 Hz

Installation

	CONO solo 50	CONO solo M	CONO solo S	CONO solo V
Weight	2,4 kg	2,4 kg	3 kg	2,6 kg
Connections	Block terminal	Block terminal	Block terminal	Block terminal